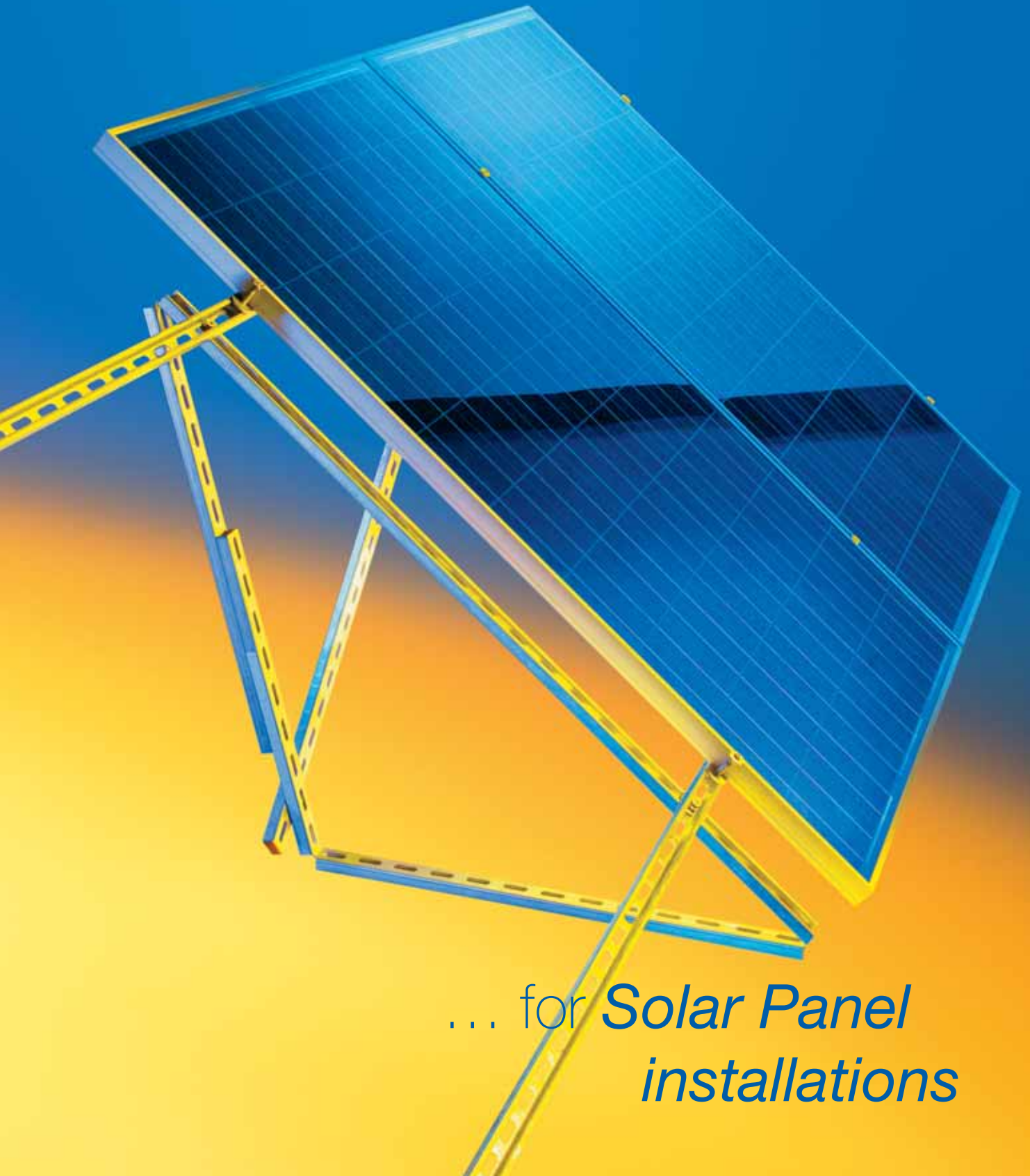


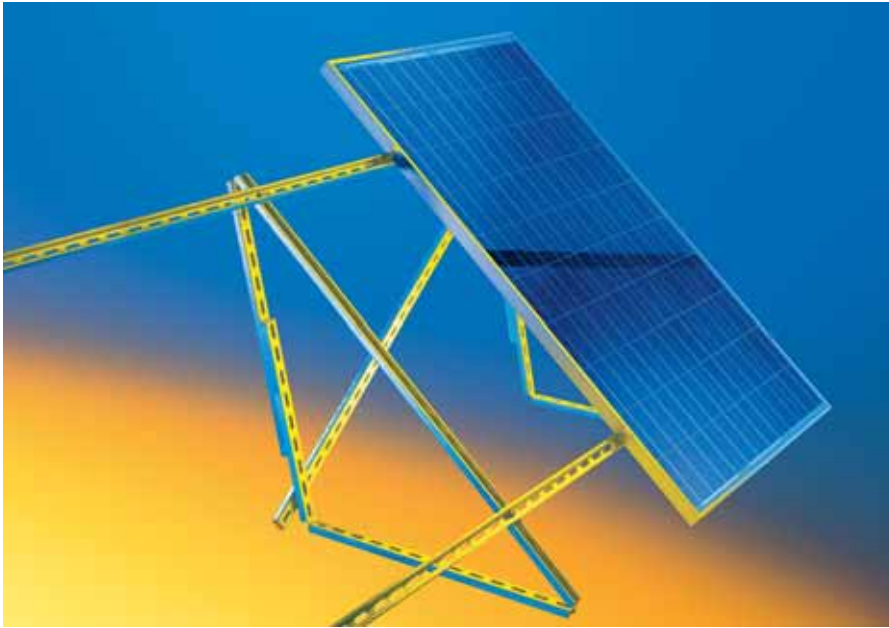
Solar Panel Support System

sikla

Cost-effective
and
Efficient ...



... for *Solar Panel*
installations



Assembly on flat roofs. The basis of the structure is a one-piece adjustable flex frame.



30° ground mounted structure using chain-link frame.

Sikla Solar Panel

Innovative, economical, efficient

Sikla Solar – the innovative system for the cost-effective installation of photovoltaic solar panels. Modular and simple to use, it is suitable for all types of applications. Tested corrosion resistant components, statically calculated constructions, and individual service backed by the Sikla guarantee offer both installers and investors a reassuring level of security. Benefit from our 40 years' experience and capacity as a specialist in support and fastening solutions – adopting the Sikla Solar System will be a profitable move!

◆ Optimised for all types of applications

- field construction
- flat roof
- sloping roofs
- facades

◆ Maximum productivity

- time-saving installation process, few components
- simple handling, no loose parts
- convenient installation aids

◆ Outstanding cost/performance ratio

- long-lasting components
- guaranteed safety

◆ Flexible fastening system

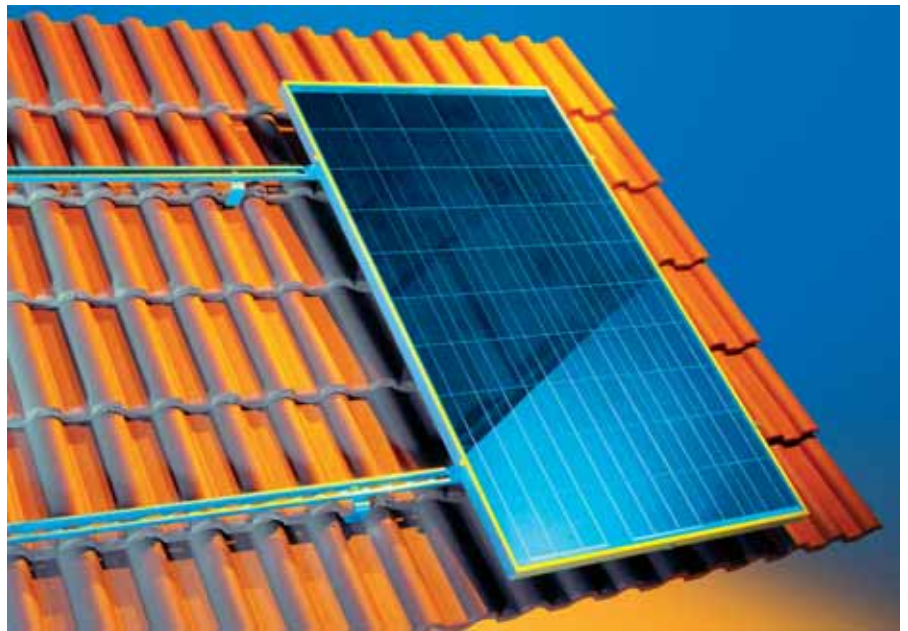
- suitable for all current panels
- middle and end clamps adjustable for all current module thicknesses

◆ Long-lasting corrosion resistance

- tested HCP-surface
- no bi-metal corrosion

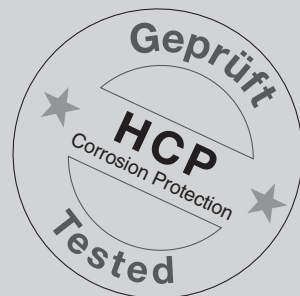


Panel sections.

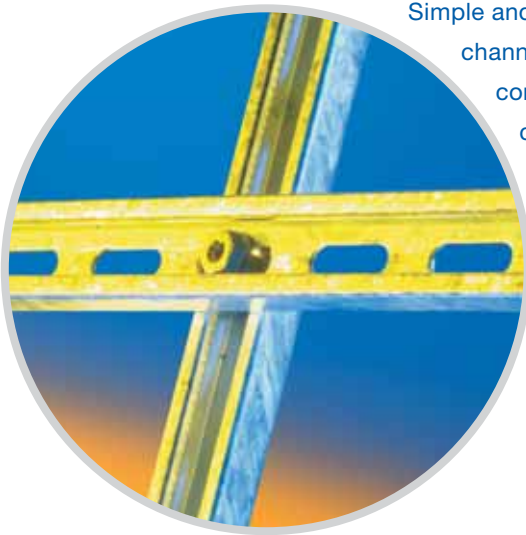


Assembly on sloping roofs. Fastening of substructure on roof hooks.

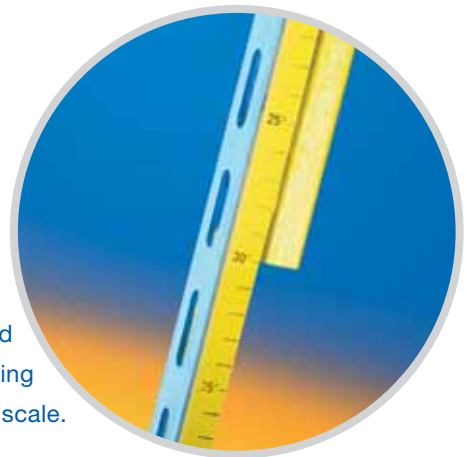
Support System



- ◆ **Statically calculated constructions**
 - statically adjusted and tested components
- ◆ **Compatible with Sikla system components**
 - flexibility to meet specific site installation assembly and load requirements
- ◆ **Extensive services**
 - individual static calculations
 - drafting of part lists
 - on-site support



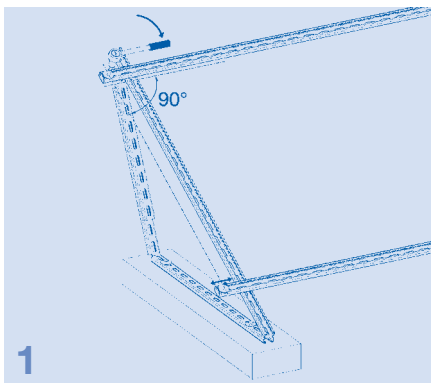
Simple and time-saving channel/base frame connections with the click-in CC channel nut.



Flex-frame with easy adjustable angle range from 20° to 45°.

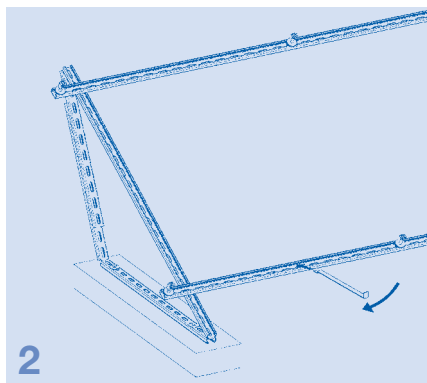
Time-saving and convenient set-up aid using the integrated graduated scale.

Simple and time-saving assembly



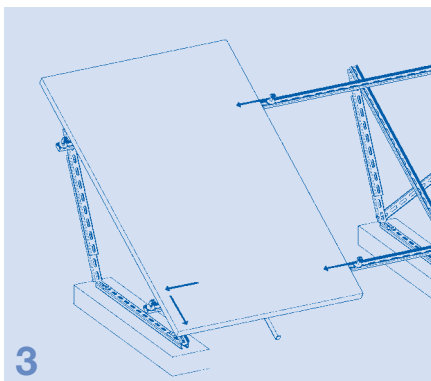
1

The end clamps are pre-installed by clicking in the channel opening and are tightened after vertical adjustment.



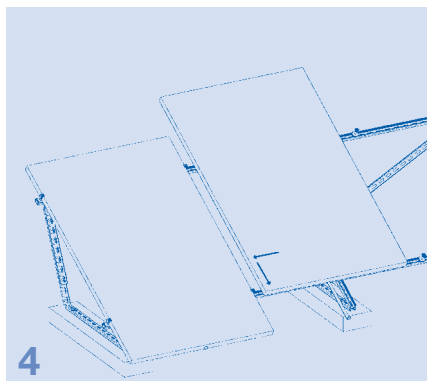
2

After aligning the braces on the end clamps the middle clamps and assembly hooks are inserted.



3

The panel to install is butted up to the end clamps and assembly hooks. The middle clamps are slid against the panel. The end clamps are then finally tightened.

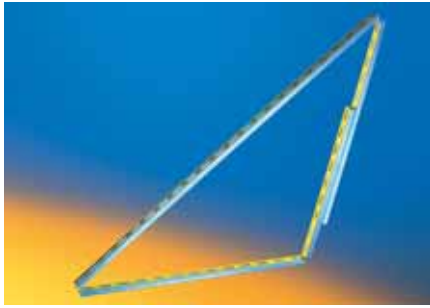


4

The second panel is pushed towards the middle clamps and assembly hooks. The middle clamps are tightened, the next middle clamps are inserted, etc.

Benefit from these advantages!

- ◆ Middle and end clamps are equipped with the Pressix CC technology – no loose parts, simply push-in, tighten, that's it!
- ◆ Middle and end clamps suit all current panel sizes.
- ◆ The assembly hook replaces the second man on the site and retains the panel until final fixing.
- ◆ Easy positioning of the end clamps allows for precise panel alignment.



Flex frame



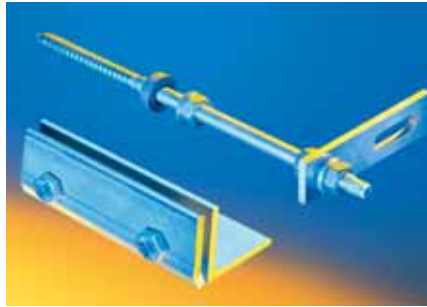
Middle clamp



End clamp



Roof hook for different tile forms



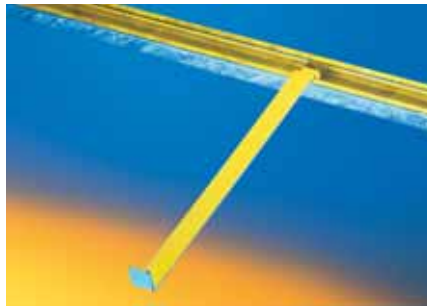
Connection for special roof forms



Mounting rail



Adapter plate + Formlock screw



Assembly hook



Accessories

A concise range for all applications

Product Summary

Part	Part-No.
Solar Flex frame	194102
Roof hook fix-45	194072
Roof hook-set "Biberschwanz"	194089
"Kalzip"-Clamp	194058
Standing alu roof seam clip	194065
Bolt screw set for corrugated fibre-cement roofing	192557
Profiled sheeting holder Solar	194171
Channel 41/21/2,0 6m hdg	193860
Solar frame middle clamp	193303
Solar frame end clamp	193297
Assembly hook Solar	194096
Adapter plate Solar	194119
Formlock Screw F 80	192512
Hexagon wooden screw M10x100	153663
CC-Channel nut M10 hcp	186284
Fixing Bracket MW 90/90/30 hdg/hcp	194041
Universal Joint UG M10 ss	171695
Channel Connector SK 41/21	186680
Bolt Anchor BZ plus ss (A4)	194201



Sikla Solar Panel Support System – Project Applications



The Solar Panel Support System is used in numerous international projects.

Higher profitability, simple and time-saving assembly, tested product quality, professional service and full compatibility with all other Sikla system products – that's the recipe for success of the Sikla Solar Panel Support Systems.

Sikla GmbH
Export & Overseas Department
In der Lache 17
78056 VS-Schwenningen
Germany
Tel.: 07720 948 453
Fax: 07720 948 353
E-mail: export@sikla.de
www.sikla.com

Our partner in your region:

